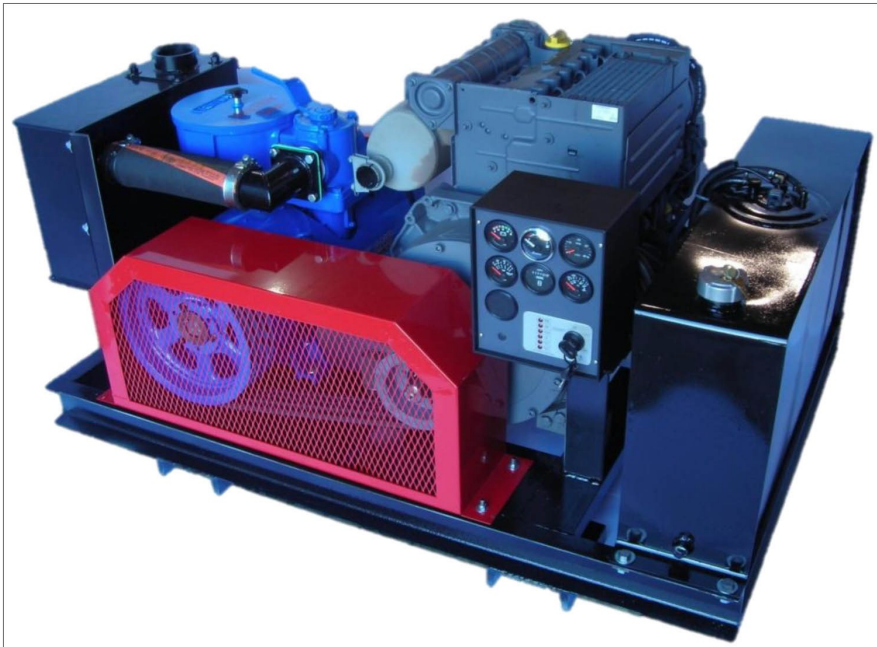


Fruitland **READY2RIG**

Eliminator Series



The Eliminator diesel (Elim D) is a unique blend of power and independence. Ideally suited for applications where remote vacuum is essential. The Elim D is skid mounted and ready for most location applications including under tank trailer frames (belly mount). The Elim D is designed for 16 hours of continuous operation.

Part # Elim D

- Includes a Diesel Engine and our RCF 500 LUF Vacuum Pump
- Easy to Install
- Strong Durable Components
- Powder Coated Finish
- Weight-1630 lbs.
- 350 CFM

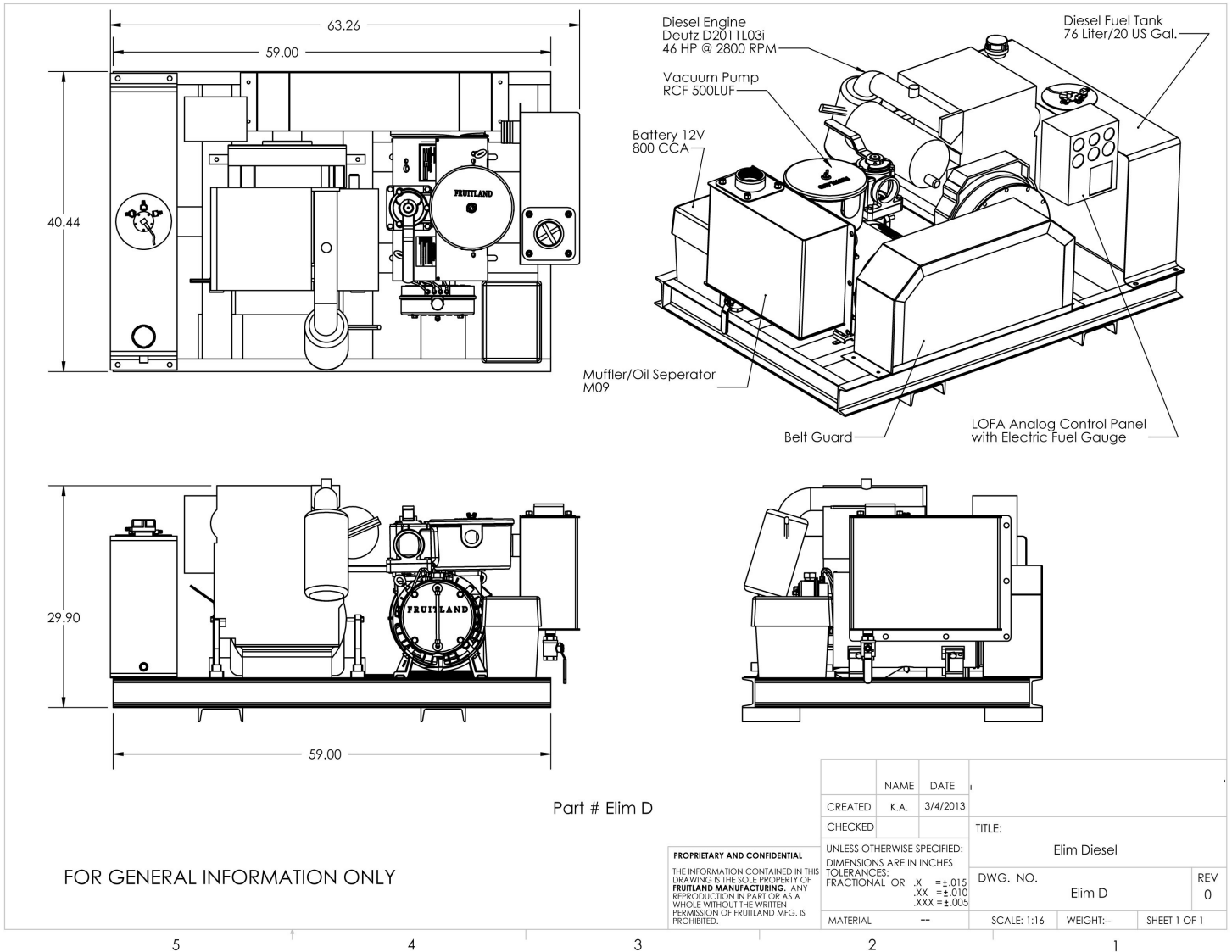
Special Features of the Elim D

- *Includes RCF500 LUF Vacuum Pump
- *20US Gal. Diesel Fuel Tank (76 Liter)
- *LOFA Analog Control Panel with Electric Fuel Gauge
- *Deutz Diesel Engine (46 HP @2800 RPM)
- *M09 High Efficiency Oil Catch Muffler
- *12V Battery

2901 North Freeway ♦ Fort Worth, Texas 76106

817-624-3181 ♦ 800-709-3184 ♦ WWW.FORTWORTHTRUCK.COM

Fruitland **READY2RIG** Eliminator Series



2901 North Freeway ♦ Fort Worth, Texas 76106

817-624-3181 ♦ 800-709-3184 ♦ WWW.FORTWORTHTRUCK.COM