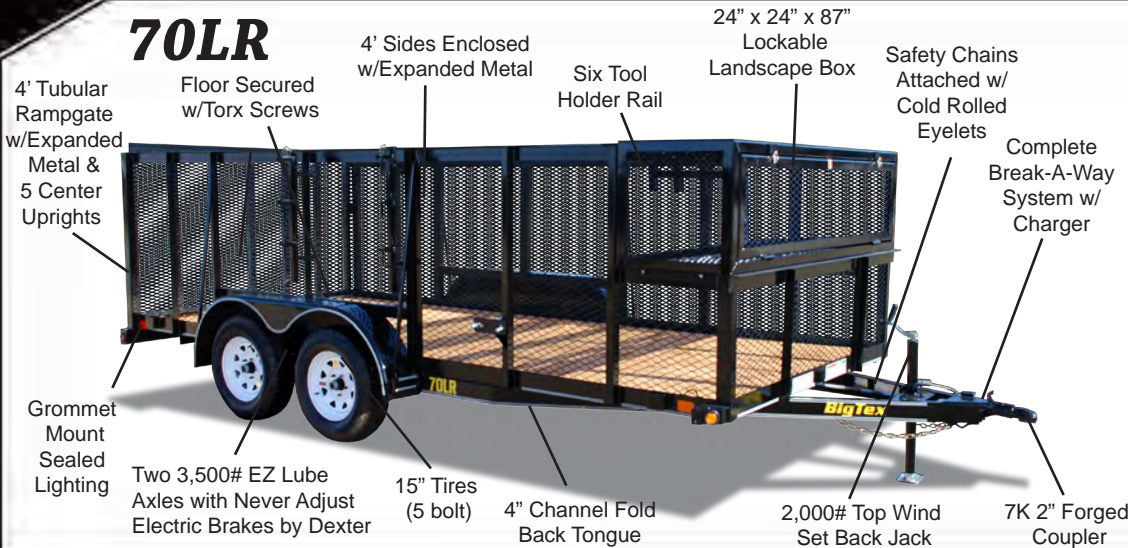




Landscape Trailers

www.bigtextrailers.com

70LR



- 70LR comes in 83" width and in lengths of 14' and 16'
- Approximate Carrying Capacity ranges from 4,600# - 5,000# depending on length

The professional landscaper's dream trailer! Comes complete with tool holders, lockable landscape boxes and expanded metal sides for the ultimate in cargo control.

15AA



- Single Axle All-Around is 50" x 8' • 1,080# Approximate Carrying Capacity • 2" Coupler • 10" Tires (5 bolt)
- 12-1/2" Solid Fabricated Sides

Solid fabricated sides help to secure and protect loads while the expanded metal floor allows for easy cleaning. Works perfect for hauling a small lawn mower or small ATV.

19SV



- 50" x 8' Single Axle Vanguard • 1,300# Approximate Carrying Capacity • 2" A-Frame Coupler • 13" Tires (5 bolt)
- 27-3/4" Sides with 24" V-Crimped Steel Panels

Perfect home and garden trailer...works great for lawn mower and ATV. The higher sides allow for more versatile loads and maximum cargo control.

30AA/35AA



- 30AA comes in 60" x 10' • 35AA comes in 77" x 10' • Approximate Carrying Capacity ranges from 1,950# - 2,050# depending on length • 2" A-Frame Coupler • 15" Tires (5 bolt)
- 17-1/4" Solid Formed Sheet Sides

Width options provide versatility to haul just about anything you need for heavy lawn and garden use, including large mowers and large ATV's. The solid sides help to secure and protect loads.

30SV



- 30SV comes in 60" width and in lengths of 8', 10' and 12' • Approximate Carrying Capacity ranges from 1,700# - 2,100# depending on length
- 2" A-Frame Coupler • 15" Tires (5 bolt)
- 29-3/8" Tall Sides with 24" V-Crimped Steel Panels

The pipe top rail and higher sides provide versatility to haul just about anything you need and protect your cargo. Great for heavy lawn and garden use, as well as light duty landscaping.

35SV



- 77" wide and in lengths of 10' and 12' • Approximate Carrying Capacity ranges from 1,700# - 1,850# depending on length
- 2" A-Frame Coupler • 15" Tires (5 bolt)
- 29-3/8" Sides with 24" V-Crimped Steel Panels

The wider width allows more freedom to carry extra wide mowers and lawn equipment. Secure your cargo with the pipe top and higher sides.

30LS



- 60" x 10' Single Axle Landscape • #1,730 Approximate Carrying Capacity • 2" A-Frame Coupler • 15" Tires (5 bolt)
- 4' Sides Enclosed with Expanded Metal

Everything a landscaper needs in a trailer...comes complete with tool holders, lockable landscape boxes and expanded metal sides for the ultimate in cargo control.

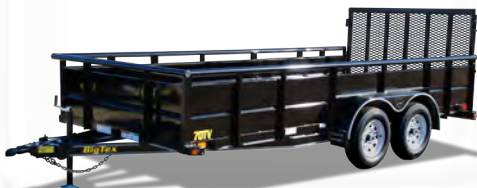
35LS



- 83" width and in lengths of 10', 12', and 14'
- Approximate Carrying Capacity ranges from 1,175# - 1,575# depending on length • 2" A-Frame Coupler • 15" Tires (5 bolt)
- 4' Sides Enclosed with Expanded Metal

The wider width and length options make this trailer perfect for professional landscapers! Comes complete with tool holders, lockable landscape boxes and 4' sides enclosed with expanded metal.

70TV



- 83" width and in lengths of 12', 14' and 16' • Approximate Carrying Capacity ranges from 4,900# - 5,150# depending on length
 - 7K 2" Forged Coupler • 15" Tires (5 bolt)
 - 29-3/8" sides with V-Crimped Steel Panel Sides • 2-3/8" Pipe Top Rail
- Wide width and higher v-crimped steel sides provide versatility to haul just about anything you need and help to protect your cargo. Perfect for heavy lawn and garden use, as well as heavy duty landscaping.

70SR



- 72" x 10' Tandem Axle Single Ram Dump
- 5,100# Approximate Payload • Box Capacity of 2.5 Cubic Yards • 2-5/16" Stamped A-Frame Coupler • 15" Tires (5 bolt)
- 20", 16 Gauge Sides with Formed Channel Supports

The 70SR comes complete with enclosed pump and battery box, a 16 gauge smooth steel floor, lockable control unit, single cylinder lift and a one piece-2 way style rear gate. Perfect for landscaping and garden use!

10SR



- 78" x 12' Low Profile Tandem Axle Dump • 6,600# Approximate Payload • Box Capacity of 5.7 Cubic Yards • 2-5/16" Adjustable Forged Coupler • 16" Tires (6 bolt) • 24" 12 Gauge Sides

Comes with a 12 gauge-one piece floor, modular sealed wiring harness, self contained electric/hydraulic single cylinder lift, 1/2" tie rail on all four sides, 13 stake pockets on sides and front, and combo gate making the 10SR great for multiple landscaping and gardening usages.

OPTIONS



Weed Eater Racks



Gas Spring Assist on Ramp Gate



Tool Holders



Removable /Lockable Landscape Box